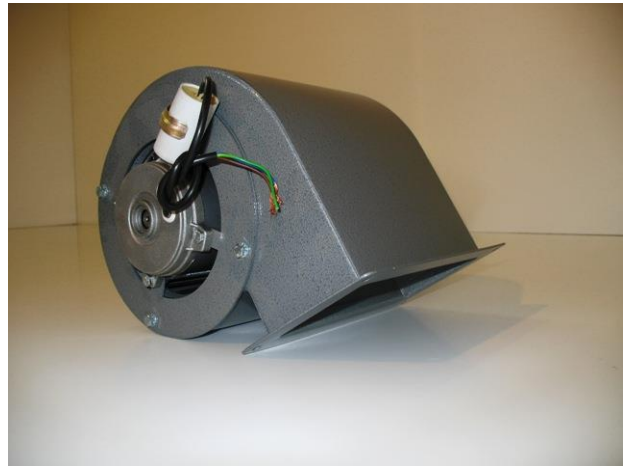


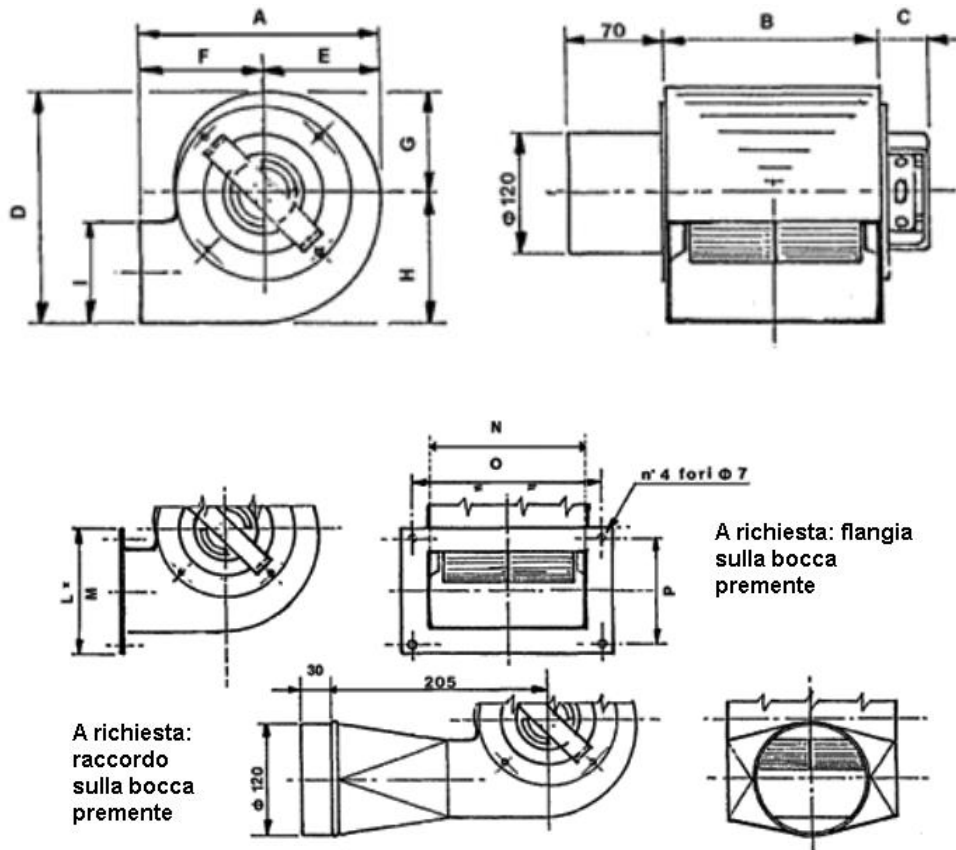
**SERIE EP-DAS-I** (Centrifugal fan with double inlet)



- Suitable to convey clean air with temperatures until 60°C
- Made in painted steel

**TECHNICAL FEATURES:**

- Electrical motor 2 poles: Air flow from 100 to 600 m<sup>3</sup>/h with Pressure from 3 to 19 mm H<sub>2</sub>O;
- Electrical motor 4 poles: Air flow from 200 to 6150 m<sup>3</sup>/h with Pressure from 4 to 60 mm H<sub>2</sub>O;



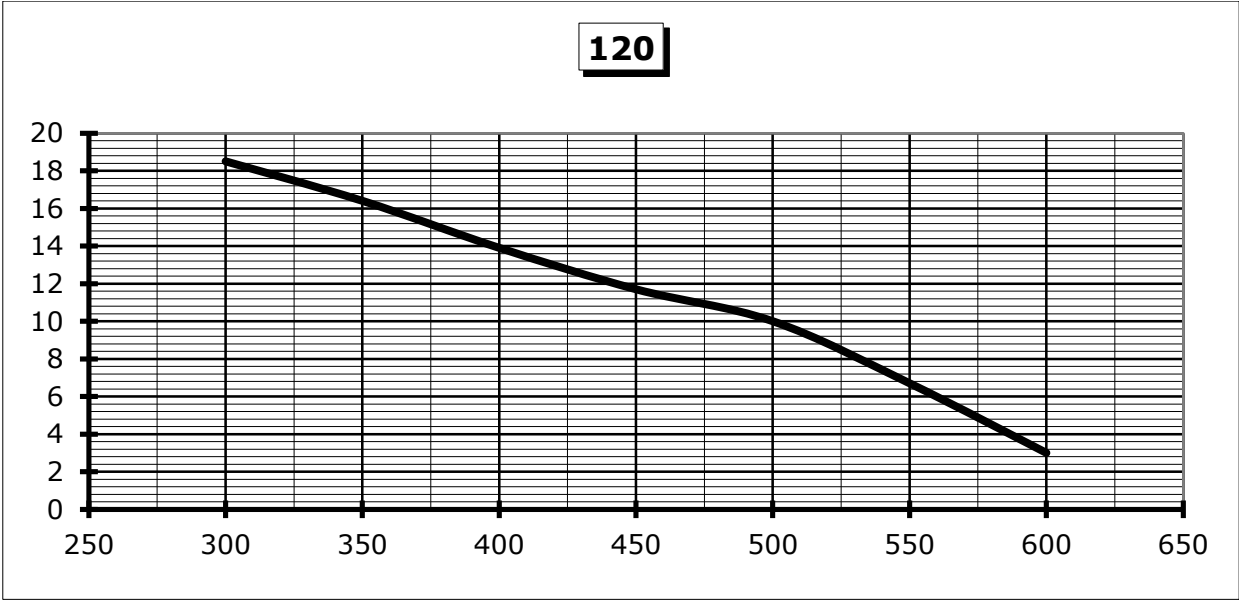
MODEL	EP-DAS 120/l	EP-DAS 146/l	EP-DAS 160/l	EP-DAS 180/l	EP-DAS 200/l	EP-DAS 240/l	EP-DAS 280/l
A	180	200	252	267	293	333	400
B	150	160	230	230	260	290	330
C	25	35	10	20	50	80	100
D	170	203	252	260	300	373	438
E	79	90	115	122	148	181	225
F	101	110	137	145	145	152	175
G	74	90	109	115	119	164	191
H	96	113	143	145	181	209	247
I	69	95	90	123	113	135	173
L	120	135	135	170	160	190	233
M	200	200	245	247	307	345	390
N	150	160	200	200	260	290	330
O	180	180	224	226	275	319	362
P	95	115	114	123	128	164	205

MODEL		EP-DAS 120/l	EP-DAS 146/l	EP-DAS 160/l	EP-DAS 180/l	EP-DAS 200/l	EP-DAS 240/l	EP-DAS 280/l
<b>Rpm 2800</b>	W	100	150	-	-	-	-	-
	A	0,6	0,8	-	-	-	-	-
Min./ Max. Flow rate (m <sup>3</sup> /h)		300 / 600	200 / 675	-	-	-	-	-
Max. pressure (mm H <sub>2</sub> O)		19	48	-	-	-	-	-
<b>Rpm 1400</b>	W	-	25	88	185	370	740	1500
	A	-	0,75	0,6	0,8	3	5,6	10
Min./ Max. Flow rate (m <sup>3</sup> /h)		-	100 / 340	440 / 1100	500 / 2500	800 / 2000	1280 / 3200	2850 / 6100
Max. pressure (mm H <sub>2</sub> O)		-	12	16	22	34	45	60

# EP-DAS / I

**120**

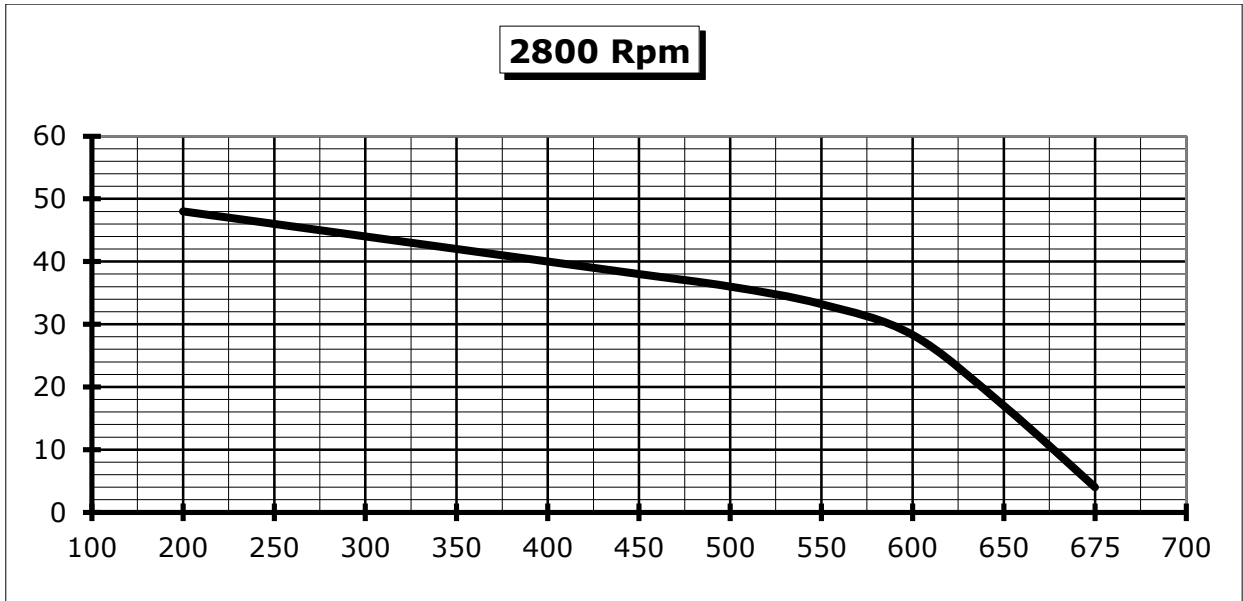
mm  
H<sub>2</sub>O



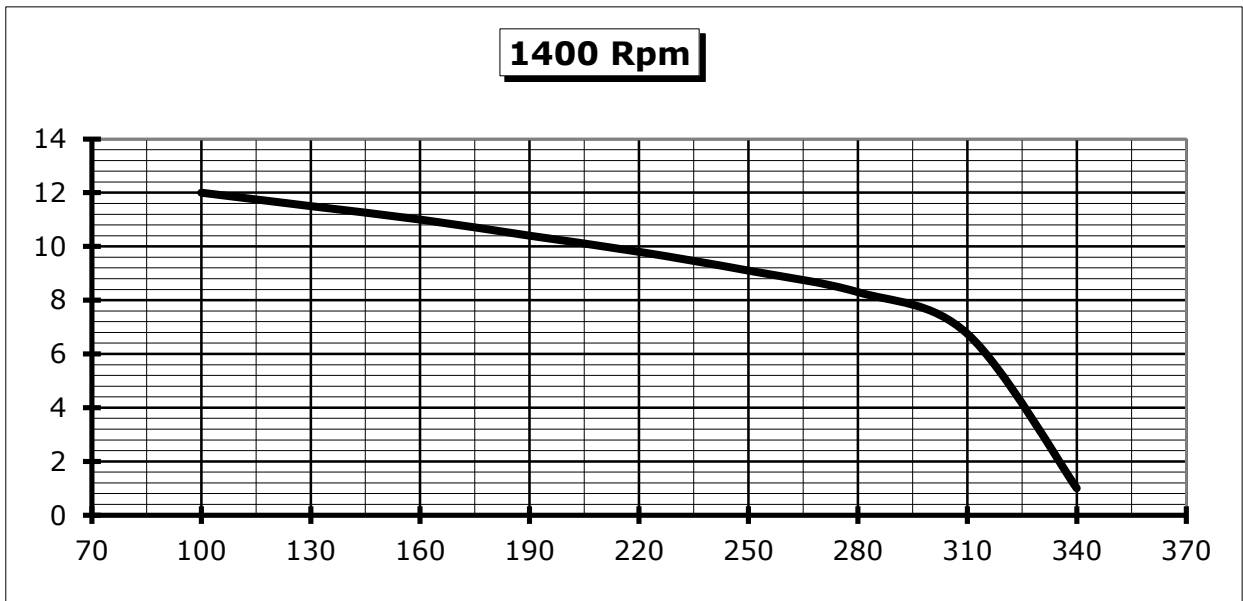
m<sup>3</sup>/h

# EP-DAS 146 / I

mm  
H<sub>2</sub>O



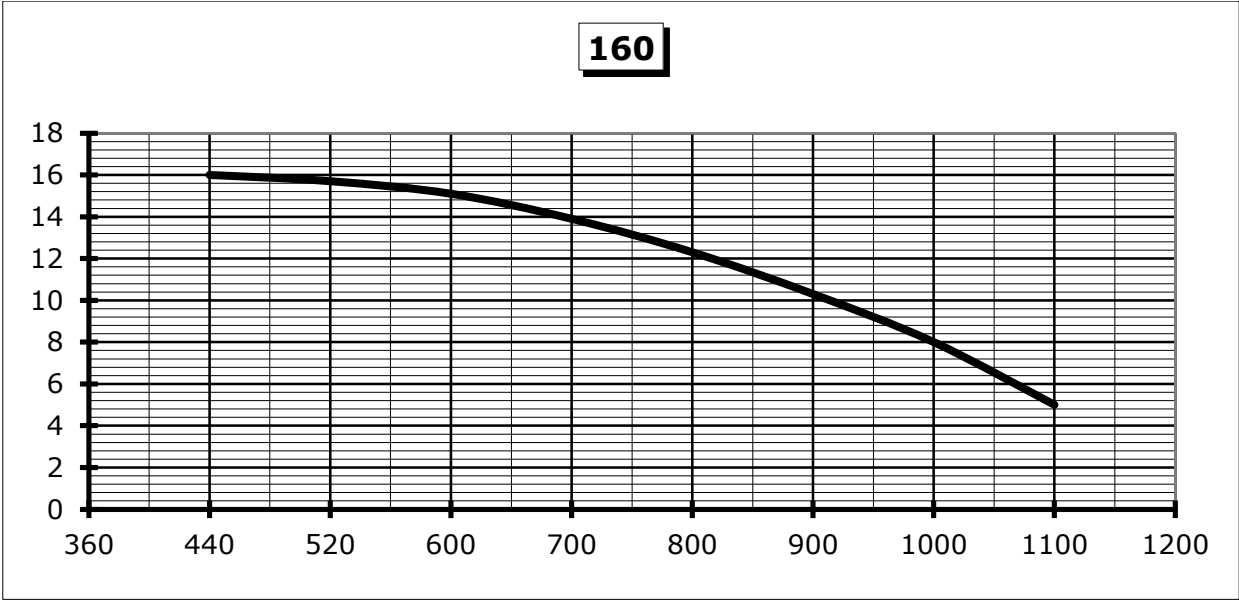
mm  
H<sub>2</sub>O



# EP-DAS / I

mm  
H<sub>2</sub>O

**160**

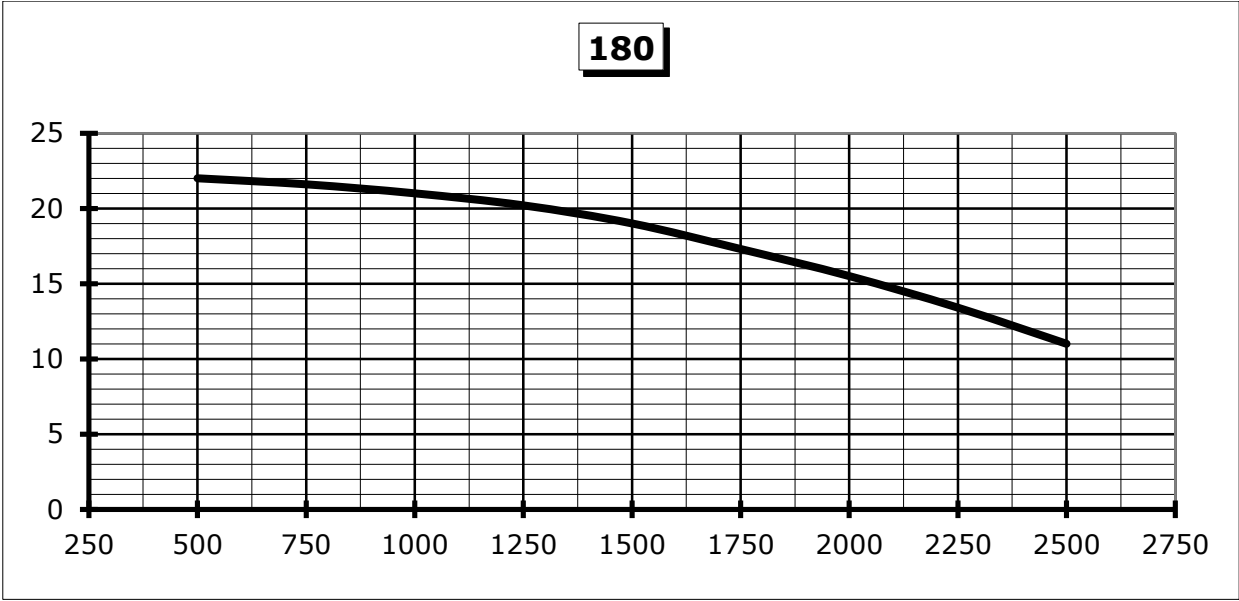


m<sup>3</sup>/h

EP-DAS / I

mm  
H<sub>2</sub>O

180

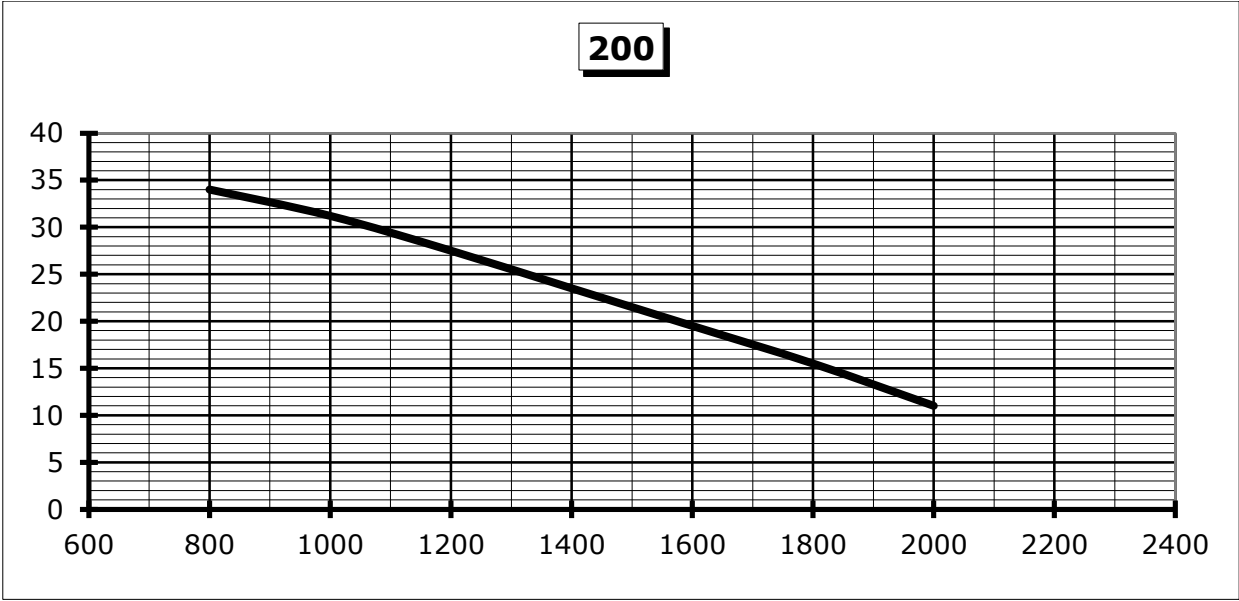


m<sup>3</sup>/h

# EP-DAS / I

mm  
H<sub>2</sub>O

**200**

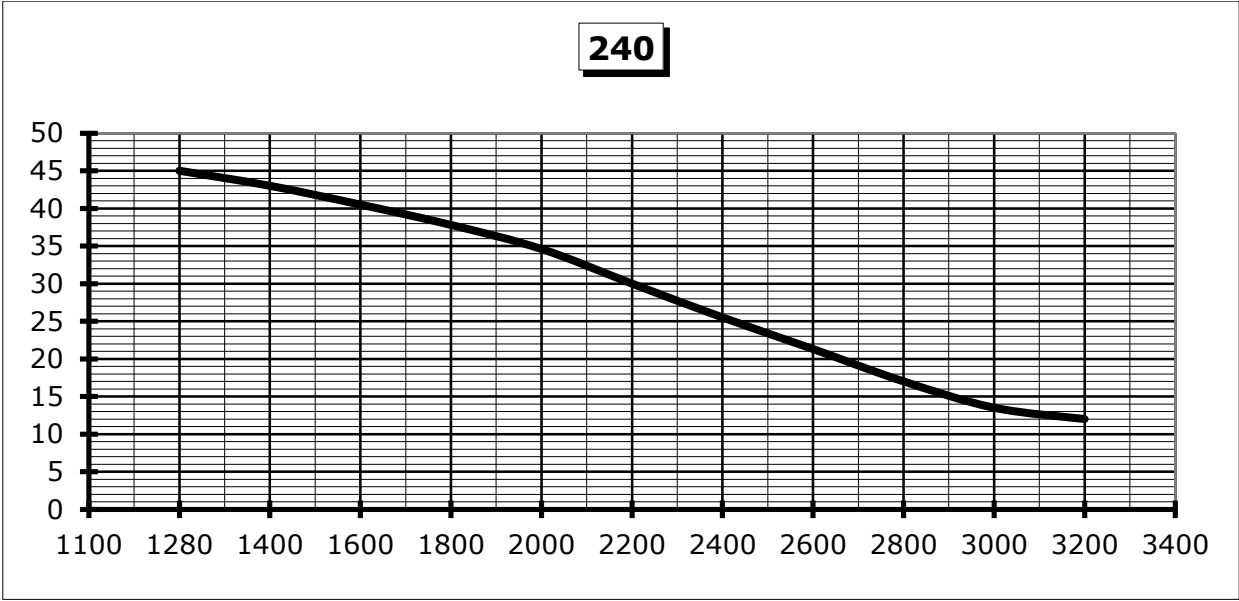


m<sup>3</sup>/h

# EP-DAS / I

240

mm  
H<sub>2</sub>O



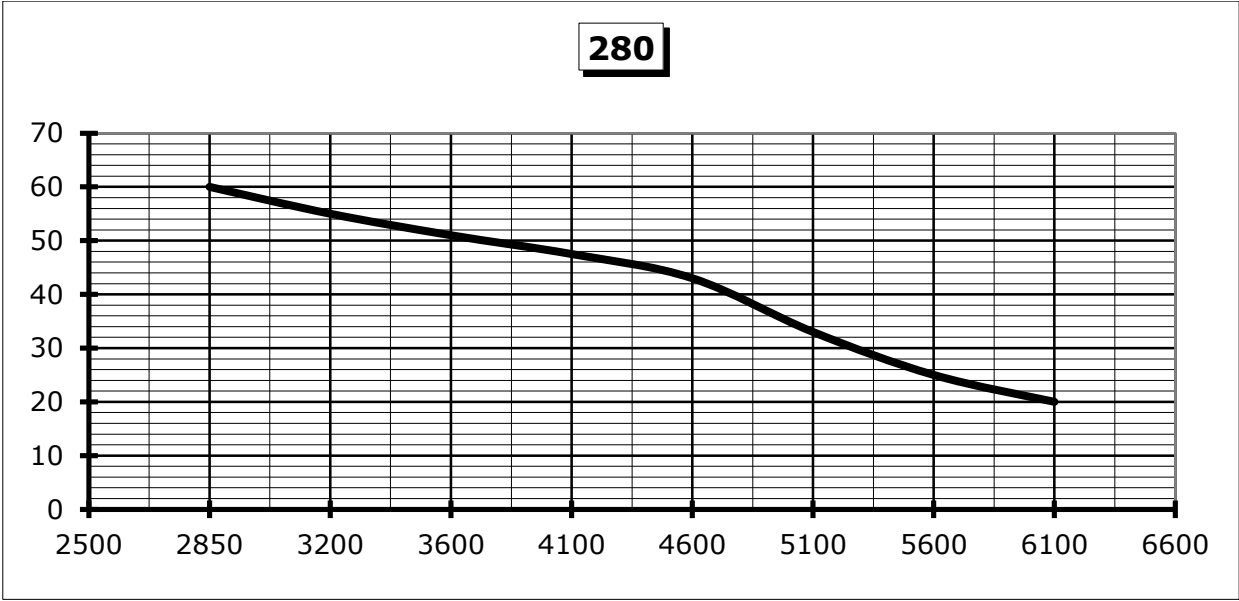
m<sup>3</sup>/h



# EP-DAS / I

**280**

mm  
H<sub>2</sub>O



m<sup>3</sup>/h