

## **SERIE EP-AP** (Ventilatore centrifugo a semplice aspirazione)

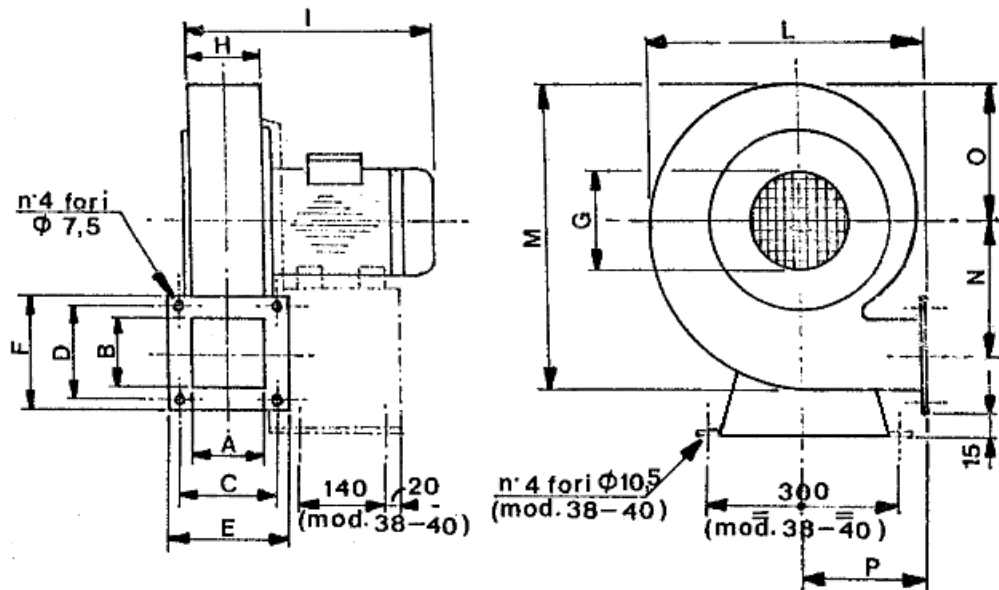


### **DESTINAZIONE D'USO**

- Adatto a convogliare aria pulita con temperatura massima di 60°C
- Dotato di boccaglio con rete di protezione
- Costruito in acciaio verniciato

### **DATI TECNICI**

- Motore 2800 Giri / 1' – da 59 a 2208 W: Portata da 110 a 1400 m<sup>3</sup>/h con pressione da 30 a 300 mm H<sub>2</sub>O, secondo grandezze e potenze

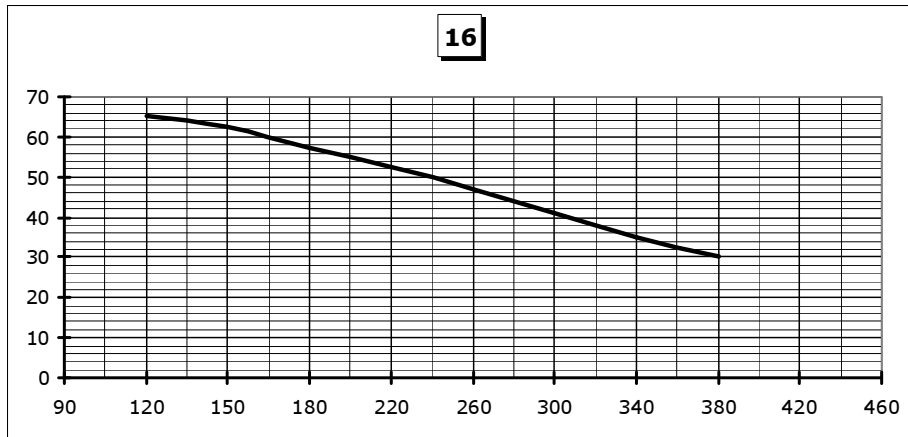


MODELLO	A	B	C	D	E	F	G	H	I	L	M	N	O	P
<b>EP-AP 16</b>	46	46	70	70	90	90	85	55	190	210	240	108	105	100
<b>EP-AP 20</b>	69	63	95	95	115	115	115	80	213	255	300	135	130	130
<b>EP-AP 24</b>	69	63	95	95	115	115	115	80	213	317	370	175	160	145
<b>EP-AP 24S</b>	69	63	95	95	115	115	115	85	269	317	370	175	160	145
<b>EP-AP 28</b>	82	82	105	105	125	125	115	85	274	388	438	222	194	168
<b>EP-AP 31</b>	82	82	105	105	125	125	115	85	300	388	438	222	194	168
<b>EP-AP 38</b>	89	89	115	115	135	135	137	96	330	505	541	251	245	235
<b>EP-AP 40</b>	89	89	115	115	135	135	137	96	330	505	541	251	245	235

MODELLO	<b>EP-AP 16</b>	<b>EP-AP 20</b>	<b>EP-AP 24</b>	<b>EP-AP 24S</b>	<b>EP-AP 28</b>	<b>EP-AP 31</b>	<b>EP-AP 38</b>	<b>EP-AP 40</b>
Hp	0,08	0,2	0,25	0,5	0,75	1	2	3
W	59	147	184	368	552	736	1472	2208
<b>Giri / 1'</b>	<b>2800</b>	<b>2800</b>	<b>2800</b>	<b>2800</b>	<b>2800</b>	<b>2800</b>	<b>2800</b>	<b>2800</b>
Portata Min./ Max. (m <sup>3</sup> /h)	120 / 380	140 / 440	170 / 550	200 / 600	260 / 800	350 / 1050	400 / 1250	450 / 1350
Pressione max. (mm H <sub>2</sub> O)	65	80	100	125	160	220	270	300

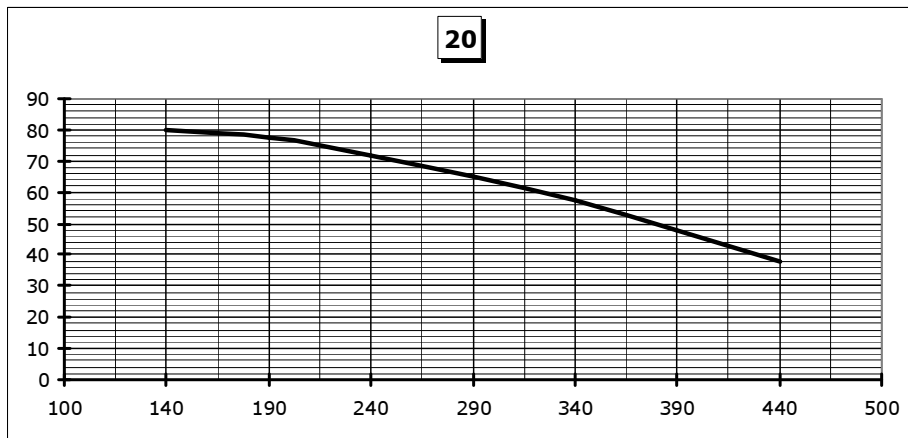
# EP - AP

mm  
H<sub>2</sub>O



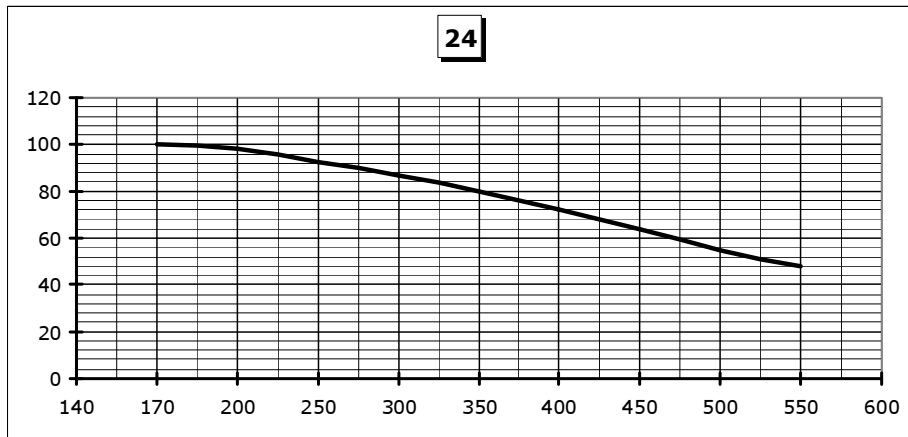
m<sup>3</sup>/h

mm  
H<sub>2</sub>O



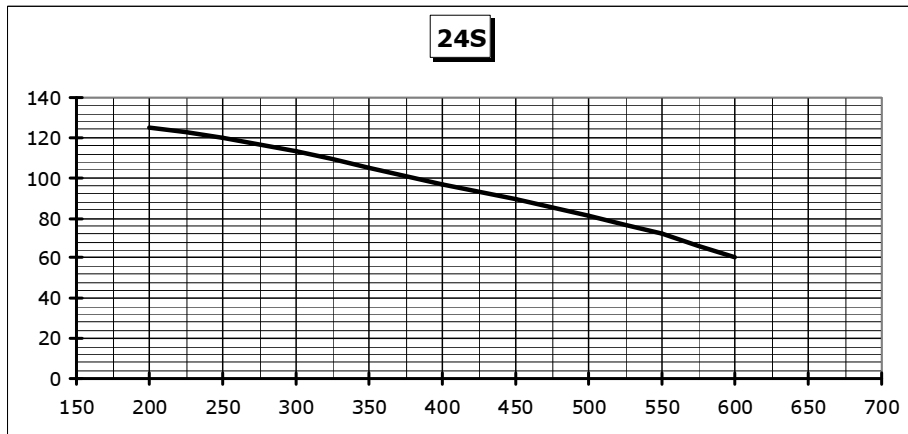
m<sup>3</sup>/h

mm  
H<sub>2</sub>O



m<sup>3</sup>/h

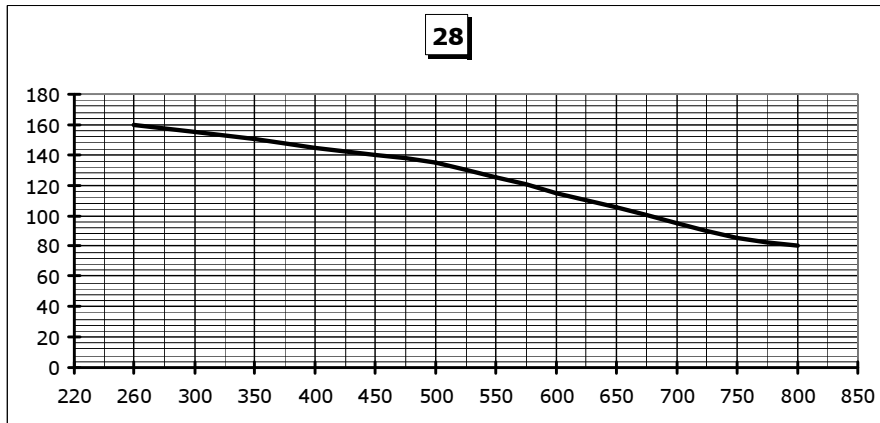
mm  
H<sub>2</sub>O



m<sup>3</sup>/h

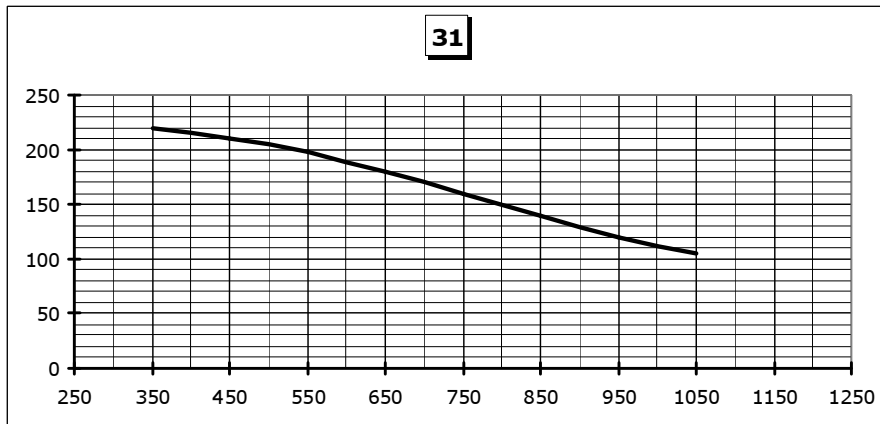
# EP-AP

mm  
H<sub>2</sub>O



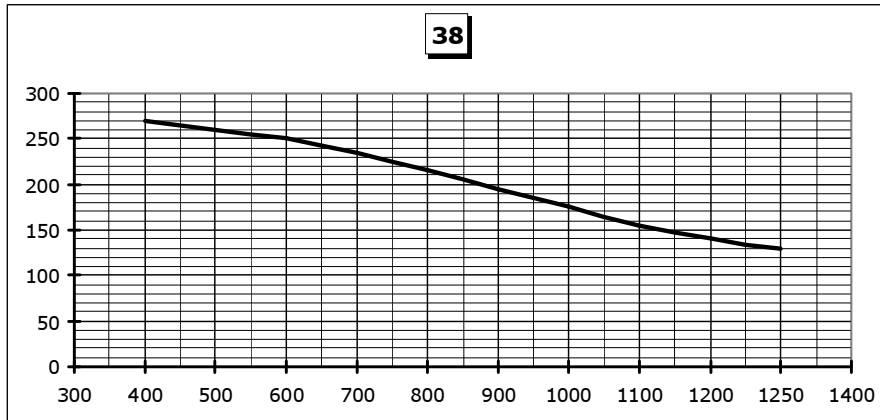
m<sup>3</sup>/h

mm  
H<sub>2</sub>O



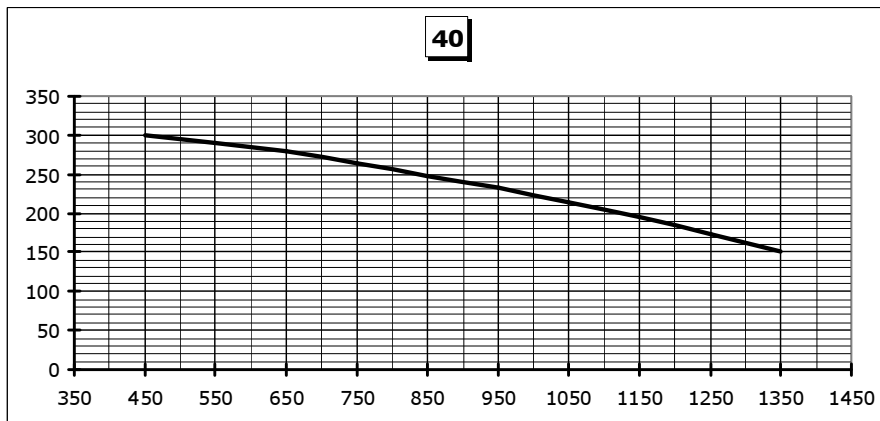
m<sup>3</sup>/h

mm  
H<sub>2</sub>O



m<sup>3</sup>/h

mm  
H<sub>2</sub>O



m<sup>3</sup>/h